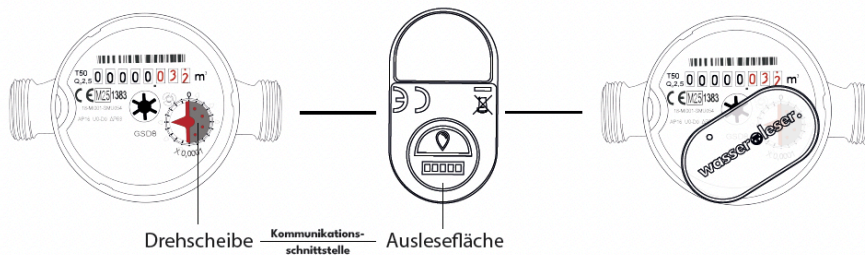


Manual: wasserleser.

Installation instructions: water reader.

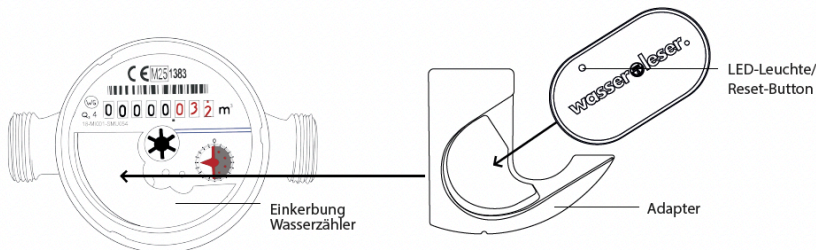
1. Please read the safety information carefully and with attention.
2. As water meters can vary in shape depending on the manufacturer, the following must be observed during installation and mounting: Ensure that the reading surface of the water reader is mounted above the turntable (see Figure 1) of your water meter. The turntable of the water meter serves as a communication interface: only here can the rotations be read and the data transmitted.

Abbildung 2: Positionierung Schnittstelle

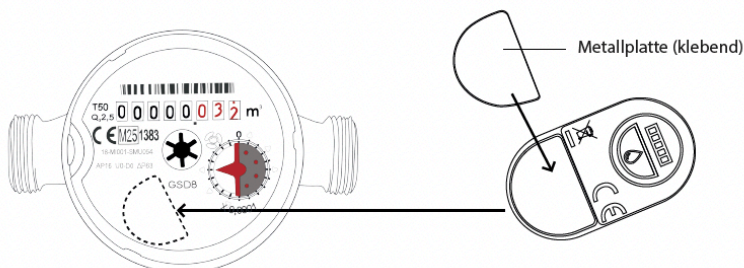


3. The installation of the water reader differs depending on the model of your water meter. There are two Variants:

Option 1: Adapter (water meter with notch): The adapter supplied is inserted into the notch on the water meter. The water meter reader is then placed on the adapter.



Option 2: Adhesive plate (water meter without notch): First, carefully attach the double-sided adhesive metal plate to the water meter reader. Taking into account the communication interface (Figure 2), the water meter reader can then be stuck onto the water meter.



4. Now connect the water meter to the USB power supply using the USB-C cable.
5. Download the app – „stromleser – Energie im Blick“ – from the App Store or Google Play Store onto your smartphone.
6. Open the app and create an account with your email address or log in directly with your Apple or Google account.
7. To connect your device to the app, tap “+” within the app and then the “water meter” tile.
 - 7.1 Make sure Bluetooth is enabled on your smartphone (enable it if necessary) and hold it close to the water meter.
 - 7.2 Now select your water meter from the list of available devices to establish the connection. Once the device has been selected, the water meter's LED will start flashing green.
 - 7.3 Then select your personal Wi-Fi from the available networks and enter your Wi-Fi password.
 - 7.4 Confirm the connection in the app and wait until the water meter is fully set up.
 - 7.5 After successful setup, enter your current consumption level, including the consumption unit, once. You can also enter your current consumption price if you want.
 - 7.6 Once it's all set up, the water reader will show each meter reading by flashing the LED blue for a second. If the connection fails, the LED on the water reader will start flashing red. Wait a few seconds, unplug the water reader, and try connecting again.
8. Done—your water meter now measures your consumption in real time and appears on the app's home screen. Tap on it to quickly and easily view your consumption data and statistics. Enjoy reading your meter!

Note: As features may be added, this guide will be regularly updated and revised. Visit our website at www.energieleser.de to access the latest version at any time.

Quick fixes:

1. **Reset to factory settings:** To reset the device, press and hold the reset button for 7 seconds.
Tip: The reset button is located on the front of the water reader. Use a paper clip and gently press into the hole to activate the button. After the reset, the LED will start flashing blue rapidly, indicating that the water reader is ready for a new setup.
2. **Software update:** via app To ensure your device has the latest features, start the update within the app. Important: During the entire process, the water reader must not be removed from the water meter or disconnected from the power supply.
3. **LED signals and their meaning:** You can find the exact meaning of the LED signals at any time on our website: www.energieleser.de. Please note: The LED signals may change due to updates – you can always find the latest information online.

Note: If you have any questions, encounter a problem, or need more information, simply scan the following QR code:



1. Intended use: The water reader allows you to conveniently read the consumption data from your water meter. The product is intended for private use and should not be used for any other purpose.

1.1 Storage instructions: Before using this product, it is necessary to carefully read the enclosed instructions, including the safety instructions, and ensure that everything has been understood. Failure to do so may result in serious injury or even death. To avoid risks such as fire, explosion, electric shock, or other property damage, all instructions must be followed. The product may only be used by persons who have read and understood the contents of this instruction manual in full. Ensure that all persons using the product have read and follow these instructions before use. Keep all safety instructions and instructions and pass them on to subsequent users of the product. The manufacturer is not liable for property damage or personal injury resulting from improper handling or failure to observe the safety instructions. In such cases, the warranty claim shall be void.

1.2 Obtaining documentation and information: The current version of the documentation is available at <https://www.energieleser.de>. Comments can be sent to our support team by email at aninfo@energieleser.de.

2. Product description:

2.1 Technical details: The water meter reader was developed to retrieve consumption data from water meters using magnetic signals. The water reader transmits the recorded measurement data via Wi-Fi to the water reader cloud, where it is processed and can then be displayed via the electricity reader app.

2.2 Product conformity: nineti GmbH hereby declares that the “water reader” radio device complies with the directive (Waiting for Nicco). The full version of the EU declaration of conformity is available at the following Internet address: <https://stromleser.de/pages/eu-konformitatserklarung>

2.2 Product specifications:

Device name: wasserleser

Dimensions (L*W*H): 40*22*16mm

Weight: 20g

Operating temperature: -20°C - 50°C

Frequency range: 2.4Ghz

Maximum power: 20dbm

Input voltage: 5V

Guidelines: ??

Standards: ???

Certification: CE

3. Installation and commissioning: Follow the instructions on the first page of this user manual. For more information, scan the QR code “to the video tutorial” on page 2 or visit our website: <https://www.energieleser.de>.

4. General maintenance and servicing: The product parts should be handled with care and properly maintained to ensure their service life. Please clean the parts only with a dry cloth and do not use solvents.

5. Troubleshooting: For specific concerns or problems, please visit the FAQ page at <https://www.energieleser.de> or contact customer support at unterinfo@energieleser.de

6. Safety Instructions: This product is an electrical device and should be kept out of the reach of children and persons with limited perception. The following safety information should be read carefully before assembly and commissioning:

1. Ensure that all work is carried out in a dry and safe environment.
2. Avoid contact with water and other liquids during assembly and operation.
3. Ensure that all connections are tight and secure to prevent short circuits and other electrical hazards.
4. Follow all steps in the instructions to prevent damage to the device or injury.

WARNING: Before installing the water meter, carefully check the water meter and its surroundings for potential hazards. Pay particular attention to damaged or leaking pipes, unusually damp areas that may indicate a leak, and electrical installations in the immediate vicinity that pose a risk in the event of moisture. If you notice anything suspicious, stop the installation immediately and contact a specialist company. Also check our device for visible damage before installation. If you find any damage, stop the installation and contact our customer service.

ATTENTION:

Avoid placing the product in a very hot or humid environment, as this may shorten the product's lifespan. Do not place the product outdoors in rain or snow. The product is NOT waterproof. Using the product outside the intended temperature range (-20°C to 50°C) may cause malfunctions. If the product is opened or dropped, it will be damaged. Any other type of impact may also cause damage. Store the product in a dry environment.

7. Disposal instructions

7.1 Disposal of electronic components: This symbol on the product, accessories, or packaging indicates that this product must not be treated as unsorted residual waste, but must be collected separately if necessary. If you live in the EU or another European country where there are separate collection systems for electrical waste and electronic devices, ensure that the product is disposed of properly at a recycling collection point. By disposing of the product properly, you are helping to prevent potential hazards to the environment and public health that could otherwise be caused by improper handling of old equipment. Recycling materials helps conserve natural resources.



7.2 Disposal of packaging waste: The packaging is made of environmentally friendly materials that can be disposed of at local recycling centers. By disposing of the packaging and packaging waste properly, you are helping to prevent potential hazards to the environment and public health.

8. Contact information

Nineti GmbH

Siemensstr. 48, 70469 Stuttgart

Tel.: +49 (0) 711 60192327 / Email: info@energieleser.de

Geschäftsführer Managing Directors: Nemo Fink, Nicco Fink, Tibor Hofmann

Register court: Stuttgart

Local Court Register number: HRB 783815

Registered company address: Stuttgart